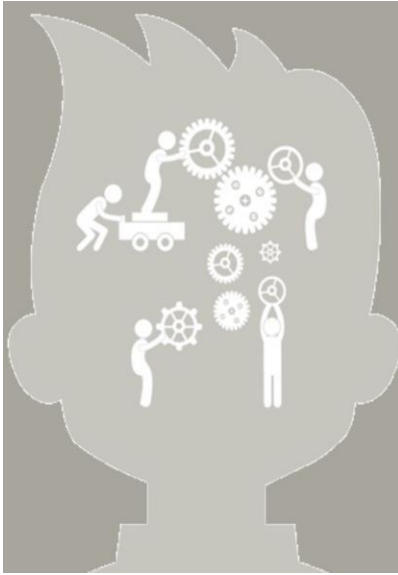


Y.A.L.E.



School
Philadelphia



2023-2024

Student Parent Handbook

Copyright Y.A.L.E. School, Inc.
1987 Updated August 2023

Table of Contents	Page
Fact Sheet	4
School Calendar	5
Emergency Closing	6
Introduction to Y.A.L.E.	7
Partnerships and Communication with Families	7
Intake Procedure	8
Assessment Phase	8
School Wide Behavior Support	8
Safety Care	8
Functional Behavioral Assessment	9
Behavior Consequences	9
Designing Student's Individualized Program	9
Requirements for Graduation	10
Grading System	10
Reporting Student Progress	10
Homework	10
Supportive Services	11
Attendance	11
Early Dismissal/Pick Up of Students	11
Lateness	11
Flag Salute and Pledge of Allegiance	12
Student Transportation	12
School Bus Rules	12
School Grounds	12
Personal Property/Electronic Devices	13
Student GPS Devices	13
Student School Supplies	13
School Property	13
Lunch	13
Community Based Instruction	14
Socialization and Peer Visitation Policy	14
Physical Education	15
Health	15
Medication	16
Medical Conditions	16
Required Physical Examinations	17
Athletics	17
Immunizations	17
Injury	18
Illness	18
Fire and Security Drills	19
Visitors	20
Telephone Calls	21
Student Attire	21
Plagiarism	22
Message to Parents/Students	23
Code of Student Conduct	23

Law Enforcement Jurisdiction	24
Harassment, Intimidation and Bullying	25
Hate/Bias Incidents	32
Drugs and Alcohol	32
Electronic Smoking Device	33
Cannabis Policy	33
Student Substance Abuse Policy	34
Corporal Punishment	34
Sexual Harassment	34
Video Surveillance and use of Video Recordings	35
Suspected Child Abuse or Neglect	35
Student Records	35
Internet Guidelines	35
Teacher-Parent-Student Contact	36
Parental Questions	36
Parent Rights	37
Acceptable Use Policy Agreement for Student Internet Use	38
2023 Parent/Student Appraisal Form	39

Y.A.L.E. School Philadelphia
135 Rector Street
Philadelphia, PA 19127

Info@yaleschoolpa.com

Contact: Jacqueline Turner, M.Ed., BCBA
jturner@yaleschoolpa.com

Hours of Session

School Day	8:30 a.m. - 2:15 p.m.
Teacher Hours	8:00 a.m. – 3:00 p.m.
Office Hours	7:30 a.m. – 3:30 p.m.



**Y.A.L.E. SCHOOL PHILADELPHIA
2023 – 2024**
135 Rector Street,
Philadelphia, PA 19127
(215) 839-0525
www.yaleschoolpa.com

School Hours: 8:30 am — 2:15 pm
Delayed opening time: 10:00 am
Early dismissal time: 12:45 pm
On early dismissal days, there is
no allotted lunch period.

August					September (14)					October (22)				
M	T	W	T	F	M	T	W	T	F	M	T	W	T	F
	1	2	3	4					1	2	3	4	5	6
7	8	9	10	11	4	5*	6*	7*	8*	9	10	11	12*	13*
14	15	16	17	18	11	12	13	14	15	16	17	18	19	20
21	22	23	24	25	18	19	20	21	22	23	24	25	26	27
28*	29*	30*	31*		25	26	27	28	29	30	31			
November (19)					December (16)					January (20)				
M	T	W	T	F	M	T	W	T	F	M	T	W	T	F
		1	2	3					1	1	2*	3	4	5
6	7	8	9	10*	4	5	6	7	8	8	9	10	11	12
13	14	15	16	17	11	12	13	14	15	15	16	17	18	19
20*	21*	22*	23	24	18	19	20	21	22*	22	23	24	25	26*
27	28	29	30		25	26	27	28	29	29	30	31		
February (19)					March (20)					April (16)				
M	T	W	T	F	M	T	W	T	F	M	T	W	T	F
			1	2*					1	1	2	3	4	5
5	6	7	8	9	4	5	6	7	8	8	9	10	11	12
12	13	14	15	16*	11	12	13	14	15*	15	16	17	18	19
19	20	21	22	23	18	19	20	21	22	22	23	24	25	26*
26	27	28	29		25	26	27	28*	29	29	30			
May (21)					June (13) = (180)									
M	T	W	T	F	M	T	W	T	F	M	T	W	T	F
		1	2	3	3	4	5	6	7					
6	7	8	9	10*	10	11	12	13	14					
13	14	15	16	17	17*	18*	19	20*	21					
20	21	22	23	24*	24	25	26	27	28					
27	28	29	30	31										

■	School closed
★	Early dismissal
*	Staff in-service day

Issued: 5.1.23
Campus calendars in PDF format available online at
www.yaleschoolpa.com/downloads
School closing info on our website www.yaleschoolpa.com, TV
channels 3, 6, 10 and FM radio WKXW (101.5) as
Y.A.L.E. School Philadelphia.

August	
28-31	New Staff Orientation
September	
5, 6, 7, 8*	Staff Development (Orientation)
4	Labor Day
11	First Day for Students
25	Yom Kippur
October	
12*	Early Dismissal
13*	Early Dismissal - Back to School Night
November	
10*	Staff Development
20-22*	Early Dismissal - Parent Conferences
23-24	Thanksgiving Recess
December	
22*	Early Dismissal - Winter Recess
25-29	Winter Recess
January	
1	New Year's Day
2*	Staff Development
15	Martin Luther King Day
26*	Early Dismissal
February	
2*	Early Dismissal
16*	Staff Development
19	President's Day
March	
15*	Early Dismissal
28*	Early Dismissal
29	Good Friday
April	
1-5	Spring Recess
10	Eid al-Fitr
26*	Early Dismissal
May	
10*	Staff Development
24*	Early Dismissal
27	Memorial Day
June	
17, 18, 20*	Early Dismissal
19	Juneteenth
20*	Possible Last Day for STUDENTS

EMERGENCY CLOSING

Dear Parents/Guardians:

Y.A.L.E. School shares your concern when weather conditions present a travel hazard. Parents now have three options for obtaining prompt and reliable school closing, early dismissal or delayed opening announcements in the event of snow or other emergencies:

1. TV Announcements provided by our media partners (See chart below)
2. Online access to announcements at www.yaleschool.com
3. Text notifications on your mobile phone for those who enroll at www.yaleschoolpa.com

Campus	TV Station*	School Identification
Philadelphia	NBC10 & 6ABC	"Y.A.L.E. School – Philadelphia"

**School Closing Announcements begin at 6:30 a.m.*

School Closing/Delayed Opening Schedule

If...	Time is...
Early Dismissal NOTE: Parents should make contingency plans for their children in the event of a 12:45 p.m. dismissal	12:45 p.m.
Delayed Opening	10:00 a.m.

PLEASE DO NOT CALL THE SCHOOL...

LISTEN FOR YOUR ANNOUNCEMENT CHECK ONLINE

or

Enroll To RECEIVE A TEXT MESSAGE

INTRODUCTION

Y.A.L.E. is a private school dedicated to teaching solutions to the academic, social, behavioral and developmental challenges facing children, teens, and young adults with autism spectrum disorders and other social learning differences. It is the academic and social mission of Y.A.L.E. School to provide an individualized program of instruction that adequately challenges students, facilitates their development and prepares them to achieve the greatest degree of independence and the highest quality of life. Our school setting is based on the principles and practices of Applied Behavior Analysis (ABA). ABA uses empirically-validated procedures to assist individuals in gaining skills of academic, social and personal value.

Our academic program follows the Pennsylvania Common Core Content Standards. The PA Common Core standards are closely aligned with the National Common Core (about 85%), with a few adjustments made to better fit the needs of Pennsylvania students. Well-organized instructional methods and Y.A.L.E. teacher-designed materials permit working with students of varying abilities within the same classroom. Every effort is made to keep course material challenging, yet within the student's grasp. Like the curriculum, classroom instruction is robust, dynamic and standard-based, not text-book driven.

PARTNERSHIPS AND COMMUNICATION WITH FAMILIES

We believe that a collective, collaborative process between professionals and parents/guardians requires each party to share their resources, respecting the other's efforts and contributions towards the development of a student-centered plan. By establishing a strong home and school connection built on frequent, honest and open communication, parents/guardians and professionals can work effectively in a cooperative, productive relationship based on a firm foundation of mutual trust and confidence. In an effort to ensure this is the case we have outlined the following do and don't in regard to communication between staff, students and families.

DO

- **Make sure you are aware of lines of communication and know the correct contact person(s) who can help you with any concerns or questions.**
- **Express your concerns to the appropriate contact person in the school by speaking respectfully, calmly and clearly to assist our staff in understanding your concerns in order to address them.**
- **Ask questions related directly to your child and the services he/she receives at Y.A.L.E.**
- **Respect the privacy, rights and activities of other students, their belongings and space.**
- **Understand that all students require the level of services provided at Y.A.L.E. and discussion about any student who is not your child with staff in inappropriate, even if you directly witness or hear about incidents involving other students or other student's families.**
- **Wait until you are finished with an observation or visit to discuss any concerns you may have with staff outside of the classroom (e.g. when you are not in an area that disrupts the activities of the students or may be witnessed or overheard by any students)**

DON'T

- **Use email as a primary form of communication with staff (exceptions could include brief, factual confirmation of meeting dates or receipt of materials). Email is never an appropriate forum to discuss concerns, questions or express dissatisfaction with any aspect of the services at Y.A.L.E.**
- **Speak with inappropriate (i.e. profanity) or derogatory language with staff, or at a volume or tone of voice that is disrespectful.**
- **Ask about other students. We are required to preserve the confidentiality of each individual served at Y.A.L.E.**

- Request personal information regarding staff. We are required to preserve the confidentiality of each individual employed at Y.A.L.E.
- Expect that staff is available to assist you with personal matters that are not directly or indirectly related to the services your child receives.
- Interrupt your child's activities or disrupt the other students in the classroom during an observation or visit.

INTAKE PROCEDURE

All students must be referred to Y.A.L.E. by the local school district. Referrals must be accompanied by each child's school history, child study team evaluations, as well as the existing individualized educational plan (I.E.P.)

These records will be reviewed by the Y.A.L.E. intake team and an interview will be scheduled with the student and his/her parents. Enrollment is contingent upon approval from parents, sending school district and the administration of Y.A.L.E. A pre-admission IEP meeting will be scheduled prior to the student starting at Y.A.L.E. to amend any items in the IEP to adhere to the Y.A.L.E. program model.

ASSESSMENT PHASE

During the first 60 days of a student's tenure at Y.A.L.E., academic and social skills will be assessed by the staff. This assessment, in combination with student records, will support the determination of a student's academic and behavior goals for the school year.

SCHOOL WIDE POSITIVE BEHAVIOR SUPPORT

Y.A.L.E. School promotes a safe, secure environment for all students and staff through the School Wide Positive Behavior Support Program (SWPBS). Using this evidence-based approach, the school's well-trained staff define, model, reinforce and reward appropriate behaviors. In addition, staff help students learn and use replacement behaviors appropriate to the situation. Y.A.L.E. supports students in developing and applying adaptive behaviors to be successful in both school and future environments, such as college and careers.

The Y.A.L.E. School (SWPBS) involves a 3-tiered system:

Tier 1 is implemented with all students and provides instruction and reinforcements to encourage students to meet expectations, follow rules, and anticipate clear and consistent consequences when behavior does not match rules and expectations.

Tier 2 provides interventions for students not responding to the Tier 1 framework and may include class wide motivation systems, small group social skills instruction, or minor modifications to individual student reinforcements.

Tier 3 interventions include individualized positive behavior support plans based on functional behavior assessments and include function-based treatment protocols under the direct supervision of a Board Certified Behavior Analyst.

SAFETY CARE/PHYSICAL MANAGEMENT PROCEDURES

Y.A.L.E. School integrates the Safety-Care Curriculum within the school's interdisciplinary and person-centered approach. All Y.A.L.E. staff are required to complete Safety-Care training with a certified trainer to become skilled in providing a safe, secure and supportive environment for students who may experience a behavior challenge in the course of the day. Non-intrusive techniques and de-escalation strategies are employed by staff to minimize incidents and enable the agitated student to exhibit calmer, safer behavior.

If a student presents an imminent safety risk to themselves or others despite prior intervention strategies, trained staff will implement the least restrictive physical management procedure warranted by the situation and approved within the Safety-Care curriculum. Moreover, a supervisor is notified immediately, the incident is documented accurately, and the school nurse conducts an assessment of the student, which is also recorded. Parents are always notified the same day that a physical management procedure is implemented.

FUNCTIONAL BEHAVIORAL ASSESSMENTS

A Functional Behavioral Assessment (FBA) is the process a behavior analyst uses to determine the function or the reason(s) for a problem behavior. An FBA may be completed for your son or daughter to identify adaptations that could possibly be made so the problem behavior would be less likely to occur and to teach ways to replace destructive, disruptive, or distracting behaviors with more socially appropriate, acceptable and satisfying behaviors as a means of communicating and getting their needs met. It is important to address challenging behavior because these can quickly become learned responses that will often interfere with academic progress, life skills, and community involvement.

The frequency of the behavior, severity of the behavior, and behavioral history of the student, among other factors, contribute to the determination of the appropriate type of assessment. Indirect assessments (where the behavior of interest is not directly observed) such as, interviews, questionnaires, and rating scales are conducted regularly.

Parents/guardians, teachers, therapists, and other providers have information about your son or daughter's problem behaviors which can inform the process of the FBA.

Y.A.L.E. also regularly employs direct measure assessments where the behavior of interest is observed over an extended period of time. Through direct observation of the behavior one may be able to identify possible occasions which evoke problem behavior and the consequences that maintain it.

If direct observation is inconclusive or does not provide sufficient information to most effectively assist the student with behavioral difficulties, additional direct assessment procedures may be used. These functional assessments involve the systematic manipulation of environmental events and are termed functional analysis. Data are collected on the student's response to the various conditions in order to better understand the environmental function of the behavior and to develop more beneficial treatment procedures. If a functional analysis is warranted, informed parent/guardian consent will be obtained prior to starting.

BEHAVIOR CONSEQUENCES

Should a student engage in serious behavior contrary to defined SWPBS expectations, the misconduct and consequences are treated in relation to their seriousness. Misconduct in classrooms including behavior which interferes with orderly classroom operation is usually handled by the teacher. In some instances, a written incident report is required. The use of obscene, disrespectful or inflammatory language in class, talking back to the teacher, refusing to report to a designated area are examples of this type of misbehavior. Rules of student behavior and discipline also apply at any school sponsored event or trips, as well as during school-to-work experiences or other community-based instruction.

DESIGNING STUDENT'S INDIVIDUALIZED EDUCATION PLAN

Individualized Educational Plan meetings will be held to assist in developing or updating the student's IEP with input from all partners. Programs are developed by a comprehensive and collaborative service model which is above all empirically based. A meeting will be held for this purpose within 60 days of initial student placement and each year annually thereafter.

REQUIREMENTS FOR GRADUATION

In order to qualify for a state-endorsed diploma, a student must complete the selected program of study appropriate for his/her needs and abilities and must have earned a minimum number of credits required by their sending school district and to take and/or be proficient in the state assessment as per their I.E.P.

GRADING SYSTEM

Evaluation of a pupil's progress is solely the classroom teacher's responsibility. A numerical average will be reported based on criteria established by the classroom teacher.

Assessments: Teachers will provide three days' notice for Unit and Chapter tests in ALL subject areas. Additional means of assessment, such as quizzes, exit slips, or other formative evaluation tools will also be used by the teacher to monitor ongoing student progress and adjust level of challenge as needed without prior notification.

Report System: There will be four Progress Reports provided during the school year. A narrative summary including data collected for any grades and averages for behavior performance for each goal will be included in the Progress Reports.

Report Card Exempt Notation: This notation will be used whenever a Scheduled Change Request form reflects a student not attending a specific class. An example of this would be a student who had Industrial Arts during the 1st MP but then gets an internship/job during the 2nd MP (Scheduled Change Request form would reflect the change in classes). That student would then receive EX for the 2nd MP for Industrial Arts.

Report Card Incomplete Notation: A grade of Incomplete (I) will be given only when there is just cause: e.g., work missing due to absence, illness. Otherwise, students are expected to submit work on time. While it is permissible under some circumstances to submit late work, students should be expected to complete all work prior to the end of the marking period. As a general rule, students will be given two (2) days for each excused absence from school. Unless there are extenuating circumstances, students are expected to resolve incompletes no later than ten school days after the close of the marking period. If an extension is sought, a request must go through the Executive Director.

REPORTING STUDENT PROGRESS

The education of each student is a joint venture involving the child, the parents and the professional staff. Regularly scheduled progress reports will be issued each year. Each report may provide the opportunity for teacher or parent to initiate a personal conference.

HOMEWORK

Generally speaking you should expect your student to have homework per the Y.A.L.E. School homework policy which stipulates that homework assignments be given three (3) nights per week for elementary and middle school students and four (4) nights per week for non-VB high school students. Elementary students should expect a nightly homework session of roughly 10-15 minutes and for middle school students of roughly 30-45 minutes. Specific homework assignments can be accessed using the Google Classroom available online. Please consult with your child's homeroom teacher for directions. Supplemental work can be given upon parent request via the CLEVER website. Parents/Guardians may request an alteration to the above policy with I.E.P. team input as some students are not able to complete homework as indicated above.

SUPPORTIVE SERVICES

Y.A.L.E. offers a wide array of clinical services to its students and their parents. Upon entering Y.A.L.E., each student is carefully screened and evaluated to determine if a need exists for a particular clinical service. The clinical services provided may include individual and group therapy, parent support and training groups, speech therapy, occupational therapy, and social skills training.

ATTENDANCE

PA code 11.13 states that compulsory school age refers to the period of a child's life from the time the child enters school (which may be no later than at the age of 8 years), until the age of 17 or graduation from a high school, whichever occurs first. Every child between the ages of 8 and 16 is required by Pennsylvania State Law Regulations to attend school. Parents are responsible for notifying the school early in the day (8:00-8:30 a.m.), when a child will be absent. A child who has been absent is required to present, on the day of his/her return to school, a note of explanation signed by the parent or guardian. This statement must include: date, reason for absence, and the specific dates of the absence.

Any absence of five consecutive school days requires a doctor's certificate. The following are the only valid reasons for a student missing school: personal illness, family emergency, death in the immediate family, attendance required in court, medical or dental appointments, religious holidays, or school activities and education travel with prior approval excused by the Director of the School.

Attendance information is reported to sending school districts. In the case of chronic absenteeism, a meeting will be held with the full IEP team to develop strategies for improving attendance and addressing academic issues.

EARLY DISMISSAL/PICK-UP of STUDENTS

Students who must leave school early must present a signed parental note to their homeroom teacher on the day in question. The note must state the reason for leaving early, the time of departure, the mode of transportation, the name and relationship to the student of the person providing transportation and phone number to call to verify the authenticity of the note.

When arriving to pick up a student from school, the person supplying transportation must report to the school office and sign the student out.

Parents may sign their children out of school by reporting to the office and utilizing the sign out sheet provided. Secretaries will verify identity of parents by asking them to produce identification and through confirmation with each student. Failure to adhere to the above will result in denial of access.

Parent access must also be denied as a result of written documentation, i.e. custody paper, restraining orders, etc. to that effect. Parent requests to have adult friend or relatives pick up their children must be accompanied by phone verification with parents, producing identification and confirmation with student. Failure to adhere will result in denial of access.

Agencies with requests for information or seeking permission to see or sign out students must be accompanied by photo ID, phone verification with the agency and parental permission (when appropriate).

LATENESS

Students are expected to arrive at school punctually. Any lateness will be recorded on the attendance record and communicated to the parent or guardian. If it is necessary that a child arrive to school late, the parent **must** accompany

the student to the office verbally notify office staff of the student's arrival, and complete the sign-in sheet prior to leaving. Additionally, students who arrive to school after 10:30 a.m. will be recorded as absent.

FLAG SALUTE AND PLEDGE OF ALLEGIANCE

Pennsylvania law requires students to show respect for the flag of the United States of America. If they are conscientiously opposed to the pledge or salute, they may abstain from these ceremonies, but they are required to sit quietly and not disrupt the ceremonies.

STUDENT TRANSPORTATION

Transportation of all students will be provided by the sending school districts. Students must use this service or be dropped off by a parent or guardian that accompanies them to the front door of the building and signs them into school. **No** student will be allowed to walk, use public transportation, or drive to school. In the event that a student is suspended from the bus due to misconduct, the parents are directly responsible for transporting the student to school. No other means of student transport are sanctioned by the school. In addition, when transporting a student, the parent must sign the student in and out of school either at the front door if staff are still present during arrival or at the school office if the student is dropped off after the designated arrival window (meaning the parent or guardian must accompany the student to the office in order to sign them in).

SCHOOL BUS RULES

Y.A.L.E. expects that student conduct on school buses be in keeping with the standards required of them while they are in school. Parents and students should be aware that the driver is in full charge of the bus and the pupils. All students are required to board the vehicle appropriately, remain seated during the trip, keep the vehicle clean, and refrain from putting head, hands or feet out the windows. At dismissal, students may only load buses from designated loading zones (sidewalks). They may not cross bus traffic unless escorted. Any incidence of fighting, smoking, property destruction or use of profanity, or any other significant behavioral events reported by the drivers will be documented and communicated to the parent or guardian. Severe or repeated infractions may result in suspension or termination of transportation services. In either case (suspension or termination of bus transportation) it is the obligation of the student's parent/guardian to transport the child to and from school.

Parents with questions and/or concerns may speak directly to bus personnel, bus company, sending school district's department or transportation or to a Y.A.L.E. Administrator. Parents may also call the Supervisor of the bus company responsible for transporting their child. Bus company phone numbers are available from bus personnel as well as Building Secretaries. Please note that Y.A.L.E. is not responsible for the hiring or supervision of bus personnel or bus route assignments. These are assigned through your sending school district.

SCHOOL GROUNDS

All students are required to report to their assigned classroom immediately upon arrival to school. No student is permitted to leave the school building unless he/she is supervised.

All students must report to and remain in staff designated areas when requested to do so. Students must comply with principal's directions. Failure to comply with this request may (minimally) warrant a parent meeting.

PERSONAL PROPERTY/ELECTRONIC DEVICES

Y.A.L.E. is not responsible for the loss of, or damage to, any personal items while the item is inside or on the premises of the school building or property. All students should remove and turn off headphones/earphones/electronic devices before entering the building. All electronic devices (cell phones, ipads, ipods, Gameboys, tablets, smart watches, etc.) must be turned in at the front door and will be stored in the main office until dismissal. No students are permitted to use cell phones or text during the course of the day. Cell phones must be turned off or on silent before entering the building and be stored in the main office until dismissal. They should not be accessed by students while on school grounds or on school sponsored trips. All backpacks, bags, waist or fanny packs must be stored in the designated location for each classroom and may not be carried on the student throughout the day.

Once the student has been called down to dismiss for the day their items will be returned by the designated staff member as they leave the building. Any student using a cell phone or other personal electronic device during school hours will be asked to relinquish the cell phone to a staff member for safekeeping for the remainder of the day. If a second instance occurs, the cell phone will be returned to the parent. If a student uses or attempts to use personal electronics other than at times provided within the behavior program, and does not follow staff directions to adhere to the behavior program when prompted, the student will be asked to relinquish the item to a staff member for safekeeping for the remainder of the day. If a second instance occurs, the item will be returned to the parent. Repeated occurrences of cell phone or other personal electronics violations will result in further consequences that may include suspensions and/or a parent conference. Legal action may be taken based upon local or state codes. (Note: A student with an accommodation in the IEP for assistive technology that prescribes use of an electronic device is the sole exception to the policy).

STUDENT GPS DEVICES

Y.A.L.E. School will permit a student to wear a medically-prescribed GPS device where the student presents a risk of flight that could endanger the child's safety.

Y.A.L.E. School does not allow students to use electronic listening devices such as radios, cell phones, smart watches, GPS, and other devices that would allow a third party to hear other students and teachers in class during the school day. Such access by third parties would potentially, if not actually, violate state and federal privacy laws such as FERPA and IDEA, which have been interpreted by the U.S. Department of Education as including audio or video recording of students on buses, in hallways, and in classes. If a student has a device that combines both GPS and listening devices, that device would violate the use policy. GPS on devices are permissible.

STUDENT SCHOOL SUPPLIES

A list of suggested school supplies will be sent home with students within the first two weeks of school.

SCHOOL PROPERTY

Y.A.L.E. School provides textbooks, workbooks, and other educationally related materials for each student. All students are expected to exercise care in the handling of textbooks and school materials. Students should realize that the school building, grounds and other facilities must also be treated with respect. ***In the event of property destruction, parents may be required to replace or pay for said property before a student is allowed to return to school. Y.A.L.E. reserves the right to withhold student records until such payment is received.***

LUNCH

Y.A.L.E. Philadelphia offers daily breakfast in the form of bagels or a granola bar to all students. One lunch option will be provided daily to all students. Any student that does not like to available daily lunch option should bring a lunch and

beverage daily. Packed lunches should be packed in such a way as they do not require refrigeration until consumed, i.e. packed with a cold pack. We do provide access to microwaves to quickly reheat a meal but cannot fully cook items that take several minutes to cook as there are limited numbers of microwaves available in the lunch room. Students may be afforded the opportunity to order and purchase lunch from an outside vendor according to the school Behavior Management Plan.

COMMUNITY BASED INSTRUCTION

Y.A.L.E. School provides opportunities for students to participate in community-based instruction with the approval of the Executive Director and Site Supervisor. These activities represent continued educational programming in a natural environment to promote skill acquisition and generalization. A parent approval form **must** be signed by the parents or guardian and received by the school before the student is able to participate in a community activity. An emailed statement or permission given by phone does not satisfy the requirement. Only signed hard copies of the official form, or scanned copies of the official signed form are permissible. Parents are asked to return signed forms in a timely manner to avoid student disappointment on the day of the activity.

Please note that some community-based outings will require a fee for the cost of admission. Students will also be required to pay for individual expenses incurred on a trip. Students taking medication **must** have a Field Trip Medication Procedure Form completed, signed and returned in order for the student to attend a school sponsored trip. If a parent/guardian does not give permission for a student to attend a community based trip, the student is still required to attend school. Please note that there may be modifications to the student's classroom assignment and/or classroom staff for the day.

Y.A.L.E. School arranges community-based instruction for the purpose of career awareness, exploration and job readiness. Parents and districts receive notification of these work-based learning opportunities.

SOCIALIZATION AND PEER VISITATION POLICY

Y.A.L.E. School encourages the development of social communication and interpersonal skills throughout the school experience. Strategies such as incidental teaching foster skill acquisition in naturally occurring situations during the school day. Counselors also lead weekly direct instruction using a language and cognitive-based curriculum that emphasizes social problem-solving. Weekly social skills clubs held during the school day center bring students together to cultivate shared interests, promote friendships and build mutual respect for strengths and abilities.

At times, students show interest in dating another Y.A.L.E. student. To maintain a safe, secure and wholesome learning environment, Y.A.L.E. has established policies and guidelines in this regard. For example, if the peer is in a different homeroom, lunch visitations have specific requirements and limitations. Parents must speak with their son/daughter's teacher in advance and provide written approval before a visit or series of visits may occur. Visits are limited to no more than 2 per week, such as one in each of the students' homerooms, not to exceed two in all. No public display of affection is permitted during these visits or at any other time during the school day, which includes student activities and off-campus instruction. Students who do not show proper decorum or respect for school rules will initially receive a verbal warning and redirection. A second warning will be followed by a meeting with a counselor to review expectations and receive additional skill instruction. A parent meeting will be required for any future incidents.

PHYSICAL EDUCATION

ATTIRE:

All students must wear sneakers during the scheduled gym periods and clothing appropriate for physical activity and outdoor weather conditions.

PHYSICAL EDUCATION/ACTIVITY – Medical Excuse

Students are expected to participate fully in Physical Education class. In the event that an illness or injury prevents a student from fully participating, a doctor's note is required. The note must clearly state what the child may and may not do while in PE class. In addition, the note must state duration of time that the restrictions will be in place. In the event a student has an illness or injury, parent must contact the school nurse and/or homeroom teacher. A student who requires permanent or long term accommodations for PE class must have a Physician Directed Activity Form completed by his/her physician. This form is available in the nurses' offices. Any physician note that states restriction "until further notice" must be updated every four weeks. Students who have long-term inability to participate in PE classes will be provided an assignment to complete in an alternate location.

HEALTH

Health Instruction will be offered to all students enrolled at Y.A.L.E. The following outline specifies topics and instructional materials to be utilized. Copies of the Health curriculum are available for parents or districts to review upon request. Parents may present a signed statement to the school office excusing their son/daughter from any specific topic(s).

I. ELEMENTARY (K-5th)

Marking Period	Topic
1	Interaction of Body Systems
2	Nutrition/Fitness
3	Alcohol and Tobacco Education
4	Human Development

Materials

Text – MacMillan/McGraw-Hill Health and Wellness

Teacher made worksheets Visual Media Guest Speakers
Workbooks Post-tests

II. MIDDLE (6th- 8th)

Marking Period	Topic
1	Violence & Injury Prevention/Conflict Resolution
2	Concepts of Health/Conditions and Diseases
3	Nutrition & Weight Management; Healthful Living
4	Dating, Sex, Pregnancy & Reproduction

Materials

GoodHeart-Wilcox Comprehensive Health Skills for Middle School

Teacher made worksheets Visual Media Guest Speakers
Workbooks Post-tests

III. SECONDARY

Marking Period	Topic
1	Mental/Emotional Health and Managing Stress
2	Personal Health and Hygiene
3	Human Development: The Life Cycle
4	Safety

Materials

GoodHeart-Wilcox Comprehensive Health Skills for High School 2nd Edition

Teacher made worksheets Visual Media Guest Speakers

Workbooks Post-tests

MEDICATION

Any student who must take medication (including Tylenol) during the school day must have a parent/guardian bring the following to school: 1) a written request from the parent and physician (medication form completed). Please note the parent and physician may not be the same person. This may represent a conflict of interest per the AMA code of medical ethics 1.2.1 treating self or family. This code states that in general, physicians should not treat themselves or members of their own families. 2) The medication must be in the original, individually labeled prescription bottle. This policy also applies to asthma inhalers. If a student is to carry his/her own inhaler, this must be specified in the Asthma Action Plan, which must be completed by the physician and signed by the parent and student. The physician should provide the student with instruction for proper use of inhaler, and student must demonstrate proficiency to the school nurse. An extra inhaler should be maintained in the nurse's office. Medication forms are available on the Y.A.L.E. website under the resource tab and in the nurse's office.

When the medication is running low, the school nurse will notify the parent/guardian. **The parent/guardian is required to bring a new supply of medication to the school. Under no circumstance is medication to be placed in a student's book bag or transported to school on the bus.** YALE School is not responsible for any medication sent to school with students or bus drivers. Parents will be contacted by the school nurse if this occurs. It is recommended that a thirty-day supply be brought to school. Any changes to medications administered in school must be submitted in writing by the parent/guardian or health care provider.

Parents may direct health-related questions to the school nurse during school hours.

MEDICAL CONDITIONS

Any child diagnosed with any of the following conditions MUST complete the appropriate documentation. These forms need to be completed yearly, signed by the parent/guardian and primary health care provider and returned to the school with prescribed medication, if needed.

- Asthma – "Asthma Action Plan" and inhaler or nebulizer medication
- Diabetes – "Diabetes Plan" * with medication, glucometer and necessary supplies
- Severe Allergies – "Emergency Allergy Plan and Medication Consent" * with Epi-Pen
- Seizures – "Seizure Action Plan" , bus protocol from physician, and signed medical release form*

*All forms may be obtained by contacting the school nurse or from the Y.A.L.E. website under the Resource tab.

REQUIRED PHYSICAL EXAMINATIONS

1. The Pennsylvania School Code Section 1402. Health Services (e) requires that students upon original entry, sixth grade and 11th grade be given a "comprehensive appraisal" of their health. The physical is to be completed within 4 months prior to the start of the school year. In addition, Section 1402(c) requires the completion of medical questionnaires which are to become part of the student's health record and must state what, if any, modifications are required for full participation in the school program. A report should be sent to the school nurse and maintained on file with the student's health records.

2. Subsequent physical examinations should be conducted at least once during each of the student's developmental stages.
 - early childhood (pre-school through grade 3)
 - pre-adolescence (grades 6)
 - adolescence (grades 11)

A report should be sent to the school nurse and maintained on file with the student's health records.

ATHLETICS

NJ and Pennsylvania State Law requires every student who participates in an interscholastic sports program to have a current examination form on file in the nurse's office. This form, The NJ and PA Department of Education Athletic Pre-participation Physical Examination Form, is available on the Y.A.L.E. website and in the nurses' offices. Parent must complete the Health History Questionnaire (Part A) and the student's primary care provider/ physician must complete the Physical Evaluation Form (Part B). An examination is only valid for 365 days from the signed date of exam. If a student's previous exam is still valid, a Health History Update Form must be completed by the parent for each sport. All forms need to be reviewed and approved by the school physician prior to participation. Parents will be notified in writing of the student's eligibility. Parents and students will also receive the Concussion and Head Injury Check List and the SCA Pamphlet (Sudden Cardiac Arrest), the opioid use and misuse fact sheet and the Sports Related Eye injury fact sheet. The acknowledgement forms must be signed and returned as well.

IMMUNIZATIONS

Pennsylvania State Law and Regulations require that for admission for ALL children in ALL Grades (K-12) the following immunizations are needed for attendance: DTAP 4 Doses (tetanus, diphtheria and acellular pertussis) 1 dose on or after 4th birthday IPV 4 Doses (polio) 4 th dose on or after 4th birthday and at least 6 months after previous dose given Hep B 3 Doses 3 rd dose on or after 24 weeks of age MMR 2 Doses (measles, mumps and rubella) VAR 2 Doses (chickenpox) or evidence of immunity (had disease) 7 TH through 12TH Grade need additional immunization requirements for attendance: MCV 2 Doses (meningococcal conjugate) First dose is given 11-15 years of age; a second dose is required at age 16 or entry into 12th grade If the dose was given at 16 years of age or older, only one dose is required TDAP 1 Dose (tetanus, diphtheria and acellular pertussis)

A CHILD MUST HAVE REQUIRED VACCINES OR RISK EXCLUSION FROM SCHOOL. A child must have the required medically appropriate vaccines or a plan to complete those vaccines or risk exclusion from school. A child may still obtain medical, religious or philosophical exemption from meeting the immunization requirements. Talk to your child's pediatrician about the vaccines your child needs to attend school. Exemptions to the school laws for immunizations are: MEDICAL REASONS • RELIGIOUS BELIEFS • PHILOSOPHICAL/STRONG MORAL OR ETHICAL CONVICTION A waiver signed by parent must be documented and kept with student's records. If your child is exempt from immunizations, he or she may be removed from

school during an outbreak. If a student has a medical or religious exemption, this must be presented to the school in writing prior to admission.

If proof of immunization is not yet received, your student may be excluded from school until necessary documentation has been provided.

Contact your health care provider or the PA Department of Health at 1-877-PA-HEALTH (1-877-724-3258) Vaccine information can be found at www.dontwaitvaccinate.pa.gov Pennsylvania's school immunization requirements can be found in 28 PA Code Ch.23 (School Immunization).

Annual Flu Vaccine and Covid-19 vaccines are highly recommended for all students. A record copy of all new vaccines and booster vaccines should be sent to the school nurse.

In cases of certain communicable diseases, the Y.A.L.E. School is required to file a report with the Department of Health within 24 hours so that control measures can be used. Parents/guardians and staff are reminded to notify the Y.A.L.E. School immediately if a student or family member has developed a known or suspected communicable disease. If a student has not been fully immunized for some of these diseases (due to the student's age, medical condition, or religious reason) he/she will be excluded from the school during an outbreak of a vaccine preventable illness as directed by the state health department. Examples of "Reportable Diseases" include (but are not limited to):

Lyme Disease	German Measles	Giardiasis	Measles	Tuberculosis
Whooping Cough	Spinal Meningitis	Mumps	Rubella	Salmonellosis
Hepatitis A	Shigellosis	Chicken Pox	COVID- 19	

INJURY

If a student experiences a minor scratch, scrape, superficial cut, bump or bruise requiring minimal attention, the school nurse or First Aid trained staff will assist the student and provide care as needed.

In the event of an accident or sudden illness, first aid will be administered and the child's parent will be notified immediately. If further medical attention is required, care and movement of the child will be directed or provided by the parent. In case of an emergency requiring immediate medical intervention, the student will be transported to a local Emergency Room for treatment. The student will be accompanied by staff until the parent arrives at the hospital.

In the event of an injury occurring at school that was unreported at the time of incident or requires further medical attention, the parent must notify the school and inform the nurse of further treatment.

If a child is injured outside of the school, but is returning to school with limitations including crutches, casts, braces, stitches, etc., the parent should contact the school nurse to discuss accommodations. Parent is required to provide nurse with physician notes outlining limitations. Students returning without parental contact will not be permitted to participate fully in any Physical Education classes or sport related activities until written notice is received from the parent or primary care physician.

ILLNESS

Parents should keep a child home if he/she shows evidence of any contagious illness. Children should remain home with symptoms that include fever of 100.0 or greater, cough, chills, vomiting, diarrhea, rash of unknown origin, any signs of

Covid-19 as specified by Pennsylvania Department of Health and CDC. Children with earaches, sore throats, runny noses, stomach aches and headaches should be kept home as well, especially if symptoms are severe or will impede learning.

If any of these symptoms are found in a child at the school, the parent will be notified and asked to bring the child home immediately.

Unless otherwise indicated by current quarantine or isolation guidelines for Covid-19, students may return to school after 24 hours without symptoms, and use of fever reducing medications, or a note from the physician stating the child is not contagious. Generally speaking, children on antibiotics for a contagious illness should remain home for a minimum of 24 hours following the first dose of medication. (Refer to American Academy of Pediatrics Guidelines) Any student exposed to or diagnosed with Covid-19 or any other communicable illness will be permitted to return to school based upon PADOH, CDC and YALE School's current protocol and guidelines. Parents should contact the school nurse with questions.

FIRE AND SECURITY DRILLS/LOCK DOWN

Section 15-1517 of the Public School Code of 1949 requires all public schools (school districts, charter schools, area vocational-technical schools and intermediate units) to conduct fire drills not less than once a month. In such fire drills, pupils and teachers shall be instructed in, and made thoroughly familiar with, the use of the fire escapes, appliances and exits. The drill shall include the complete removal of pupils and teachers, in an expeditious and orderly manner, by means of fire escapes and exits from the building to a place of safety on the ground outside. Schools not required by law to maintain fire escapes, fire extinguishers and fire exits are exempt from the requirement to conduct fire drills.

Students are trained to leave the building quickly and in an orderly fashion. The following rules are to be observed during a drill:

1. Exit at the door designated by teacher.
2. Talking is not permitted during the drill.
3. Everyone must listen to all signals.
4. Students will leave the room in single file and must remain with the group.
5. No pushing or shoving.
6. No one is to remain in the building during a fire drill.
7. No one is to re-enter the school until a teacher signals to do so.

DRILLS

Fire, school security drills

Every principal of a school of two or more rooms, or of a school of one room, when located above the first story of a building, shall have at least one fire drill and one school security drill each month within the school hours, including any summer months during which the school is open for instructional programs, and shall require all teachers of all schools, whether occupying buildings of one or more stories, to keep all doors and exits of their respective rooms and buildings locked during the school hours, except during an emergency lockdown or an emergency lockdown drill. Where school buildings have been provided with fire escapes, they shall be used by a part or all of the pupils performing every fire drill.

While there is no requirement for Pennsylvania Schools to conduct monthly school security drills Y.A.L.E. adheres to the New Jersey standards which require that a school security drill is conducted within the first 15 days of the beginning of the school year.

Schools are required to hold a minimum of **two** of each of the following security drills annually:

- Active shooter;

- Evacuation (non-fire);
- Bomb threat;
- Lockdown.

Examples of other types of security drills:

- Shelter-in-place;
- Reverse evacuation;
- Evacuation to relocation site;
- Testing of school's notification system and procedures;
- Testing of school's communication system and procedures;
- Tabletop exercise;
- Full scale exercise.

Initiation

Fire alarm systems shall be initiated only during a fire drill evacuation.

Unplanned incident

Responses made necessary by the unplanned activation of emergency procedures or by any other emergency shall not be substituted for a required school security drill.

Notification

Schools will provide emergency responders with a friendly notification at least 48 hours prior to holding a security drill. Emergency responders are not required to observe security drills, however, it is encouraged that schools invite emergency responders to attend and observe at least four different security drills annually.

Record Keeping

Districts are required to annually submit the "Security Drill Statement of Assurance" provided by the Department of Education to their county office of education by June 30 of each year. The county office shall forward an information copy to the respective county prosecutor's office. The "Security Drill Record Form" provided by the Department of Education shall be completed by all schools and retained at the district level. The following information is required:

- Date and time;
- Type (specify what was drilled);
- Duration;
- Weather conditions;
- Participants (i.e. students, staff, faculty, law enforcement, fire);
- Brief description of what occurred and procedures followed.

VISITORS

Visitors are welcome at Y.A.L.E. Guests are required to make appointments as a means of minimizing disruptions in the educational program. Touring parents and professionals are scheduled in advance by contacting the Director of Admissions.

Classroom visitations by current parents and districts are arranged with the building supervisor at least two days in advance so that we can ensure that there are not an excessive number of adults present at any one day and time. Please limit classroom visits to thirty minutes. During these observations, we encourage parents/guardians and sending district representatives to take notes and set up a time to speak with the classroom teacher to review these notes and ask questions at a later time. We ask that visitors refrain from questioning the teaching staff during instructional time and from engaging students in conversation. Also, guests should schedule a time to review questions or concerns with the classroom teacher. Use of cell phones is prohibited inside the school. Any cell phone should be placed on silent or vibrate and put away prior to entering the school. Photography, video and audio recording are also prohibited. Visitors will be

escorted by staff for the duration of the observation. Y.A.L.E. is not responsible for damage or loss of any personal electronic devices brought into a classroom during an observation.

We recognize that some students may have therapists working with them at home. In the event that parents would like a home therapist to observe their child, scheduling of a visit must be pre-arranged with the building supervisor. We ask that these visits occur no more than twice a month and are limited to a 30-minute time period.

All visitors are required to report to the school office upon arrival, present ID, and follow sign in and screening procedures. Once screened they will receive a security pass. The pass must be visible during the entire visit and returned to the office once the visit is complete.

TELEPHONE CALLS

Administrators

For school-related issues, education administrators can be reached Monday through Friday between 8:00 a.m. and 4:00 p.m. Voicemails may be left after hours by calling the main office at 215-839-0525. Faxes may be sent to 267-297-8520. All voicemail messages will be returned within 24 business hours.

Classroom Teachers

Teachers can be reached Monday through Friday between the hours of 8:00 a.m. - 8:30 a.m. and 2:15 p.m. - 3:00 p.m. It is recommended that teachers and families establish a regular every other week **phone call** to maintain consistent communication. Emergent matters between the hours of 8:30 a.m. - 2:15 p.m. can be communicated to the main office at 215-839-0525 and the office staff will then contact the appropriate education personnel, if necessary. Please be aware that teachers and students will not be called out of classes for telephone messages. Requests to have calls returned will be forwarded to teachers. Calling students out of class is disruptive. Messages are delivered to students in **extreme** emergencies only. Teachers are available for phone calls before or after school hours as listed above.

School Nurse

The School Nurse can be reached at 215-839-0525 x111 Monday through Friday between 8:00 a.m. -3:00 p.m. Nursing support will be available to staff and students throughout the school day.

STUDENT ATTIRE

Students are encouraged to select school clothing that is clean and comfortable to wear. Clothing should not hinder or distract from learning. Students are also encouraged to follow good hygiene and grooming practices to maintain overall body cleanliness, including clean nails, hair and teeth. For students with a history of engaging in aggressive or self injurious behavior nails must be kept short and rounded at all times. Short is defined by the nail not exceeding the tip of the finger. Parents will be contacted by the school nurse for students not meeting this expectation. Parents may give permission for the nurse to trim their son or daughters nails if they are not able to do so at home. If you receive a call, parents are expected to trim nails prior to returning to school the following day.

Clothing or accessories, which detract from learning and present a hazard for the wearer will not be permitted. The Building Supervisor shall have the right to make the final decision regarding appropriate dress in school as well as at school sponsored events.

Please note the following examples of unacceptable clothing and inappropriate fashion that are not to be worn at Y.A.L.E. School:

1. Students may not wear head coverings (excluding established religious headwear or medical reasons), scarves, bandanas, hats and hoods.
Note: School appropriate hooded sweatshirts will be accepted, however, students may not wear hoods on their heads while at Y.A.L.E. School or during community-based instruction. Students will be given one reminder. Subsequently, the behavior will result in the consequences noted below.
2. Underwear and clothing resembling underwear may not be worn as external clothing or be exposed.
3. Gloves may not be worn.
4. Sunglasses, glazed or tinted glasses or costume contact lenses may not be worn unless it is a documented medical necessity.
5. Bare feet, flip-flops, bedroom slippers, shower shoes or any footwear considered a safety hazard may not be worn. This may include steel toe boots, heavy work boots, shoes with chunky heels, and/or high heels that present a risk to staff should the child engage in aggressive behavior. Shoes or sneakers are required at all times.
Note: if your child's shoes are presenting a risk to staff or students you will be contacted by your child's homeroom teacher and alternate shoes should be worn during the school day.
6. Bare midriffs, bare shoulders or basketball-type tank tops may not be worn.
7. T-shirts and other apparel displaying suggestive, obscene, inappropriate symbolism or that which causes disruption to learning or activities may not be worn. Examples include clothing, representing or suggesting violence, sex, alcohol, substance abuse, weapons, slander, bigotry, gang membership, etc.
8. Apparel such as dresses, skirts, shorts, and skorts, and garments worn over leggings or tights must reach the tip of the extended fingers when the arms are hanging normally at one's side, or four inches above the knee; at no time will a student be permitted to wear clothing that is disruptive to the educational process.
9. Untidy, torn, damaged, soiled or cut-off clothing does not conform to the Y.A.L.E. dress code and may not be worn.
10. Jackets/Coats Jackets, coats, windbreakers, warm up jackets, sleeveless vests or any type of outer garment may not be worn inside the school.
11. Jewelry and Other Accessories: Students are encouraged to refrain from wearing jewelry to school. Jewelry depicting or encouraging anything sexual, violent, alcohol or drug related or potentially dangerous shall be deemed inappropriate.
12. Pants and Shorts: Pants must be appropriately sized and worn at the waist; no chain link or personalized belts or buckles are permitted. Shorts above the knee, stretch pants, leggings (unless as described in #7) and pajama pants are not permitted.

Consequences for Inappropriate Dress: Students who do not come to school dressed appropriately:

1. May be asked to reverse a shirt or blouse, which has inappropriate material or markings on it.
2. May be asked to remove head covering, outer garment, jewelry or other accessories.
3. May be asked to wear appropriate clothes provided by the school.
4. Parents may be asked to bring appropriate clothing to school.
5. May lose the privileges of wearing that type of clothing.
6. Repeat violations may be subject to exclusion for the day in question.

PLAGIARISM

Academic honesty is expected of all students at Y.A.L.E. School. Every student is responsible for maintaining a high standard of academic ethics, personal honesty, and moral integrity. Therefore, plagiarism will not be tolerated.

Plagiarism is using others' ideas and words without clearly acknowledging the source of that information. To avoid plagiarism, students must give credit whenever they use the following:

- Another person's idea, opinion, or theory
- Paraphrase of another person's spoken or written word Quotations of another person's actual spoken or written words
- Any facts, statistics, graphs, drawing – any pieces of information – that are not common knowledge

Submitting a borrowed or purchased paper or submitting someone else's work as one's own or allowing someone else to submit one's work as though it was his or hers also constitutes plagiarism. Consequences for plagiarism will be determined by the administrator and may affect student grade(s).

MESSAGE TO PARENTS AND STUDENTS

Cooperation between parents and school is critical to facilitate student progress. Parents will be required to attend parent meetings with Y.A.L.E. staff and districts, make referrals to outside agencies, and provide insights on an as needed basis. In cases of more serious student problems such as threatened or attempted suicide, drug and alcohol abuse or other life threatening behavior, Y.A.L.E. reserves the right to make outside therapeutic involvement a prerequisite for a student's entrance or continued placement. Elementary and Secondary School Parent/Student Appraisal Forms may be found on page 36.

CODE OF STUDENT CONDUCT

Y.A.L.E. School values a community of students who work together to create a productive learning environment in which all students feel safe, secure and comfortable. To this end students are expected to act responsibly in demonstrating mutual respect, trust, and compassion. The faculty and staff work together to create a nurturing environment as they strive to meet our student's needs, instill in our children a love for learning, and develop in them an understanding of others.

Students have a right to receive respect, to be treated with kindness, and to be trusted. In turn, children are expected to study and participate actively in their learning, work cooperatively and to follow directions, to seek help in solving problems, to settle differences in an appropriate manner, to accept responsibility for their actions, to report instances of violations of which they are aware with the expectation of no retaliation for such reporting, to respect others' person and property, to use appropriate language, to dress appropriately, to be sensitive to others' feelings, and to help others.

In accordance with Administrative Codes, the Y.A.L.E. School has a code of student conduct. These guidelines address any violations of the code and specific areas of misconduct. These may include fighting, physical contact (both that considered a danger and that not considered a danger), non-sexual harassment and bullying (both verbal and written – including notes and hit lists), internet violations, sexual harassment and bullying (verbal – both mild and severe – physical – exposing oneself or sexual assault including exposing another), and vandalism.

Disciplinary sanctions include a number of responses to such disruptive behaviors ranging from an inability to earn points within a behavior program, to an expulsion. The degree of sanction is contingent upon many factors.

The first step in this process may be a conference with the Principal or designee who will designate the appropriate consequence. Dissatisfaction with the consequence may be appealed to the Principal or Director or his/her designee. Appeals can be made only in accordance with Pennsylvania code and statute. Students are responsible for being familiar with these policies.

To guarantee an appropriate social and educational climate, it is important that students understand that acceptable standards of behavior will be expected at all times. Discipline will be administered when any individual's actions interfere

with the right of teachers to teach and students to learn. Students are reminded that any teacher or staff member in the school has the right to correct individuals at any place and at any time.

Students are expected to conduct themselves in an orderly, respectful and courteous manner at all times. In the event a student acts inappropriately, there will be consequences in order to make it clear that this behavior is not acceptable and will not be tolerated.

The philosophy of the Y.A.L.E. School is based on the belief that as educators, we are responsible for providing each individual with opportunities to mature intellectually, creatively, emotionally, socially, ethically and physically. Such opportunities for growth are best provided in a positive learning environment characterized by an atmosphere of openness and mutual respect for the personal worth and dignity of each person.

GOALS OF THIS POLICY INCLUDE:

1. Protection of the rights of all staff and students.
2. Protection of the rights of each individual through fair and reasonable treatment of violators of the school and district rules.
3. Development of self-discipline by clearly communicating to students their rights and responsibilities.
4. Respect for the rights and personal dignity of all students and staff in a safe school environment.
5. Compliance with Y.A.L.E. School, state and federal laws.
6. Protection and maintenance of personal as well as school property.

LAW ENFORCEMENT JURISDICTION

More serious misbehavior in or out of the classroom may result in office intervention or involvement of the local authorities. The parent and supervisor are informed and may meet to discuss the situation. Misbehaviors at this level include fighting, gambling, internet violations, insubordination to a staff member, and destruction of personal or school property. School consequences may include after school plans, suspension, or individualized contingency contracts.

Criminal behavior which directly affects the safety or well-being of staff or other students most often results in immediate suspension, a parent conference and involvement of local authorities as required by the Uniform State Memorandum of Agreement Between Education and Law Enforcement Officials. Examples of this behavior are all bias acts (race, religion, color, national origin, ethnicity, gender, gender identity or expression must be reported on or off school grounds as well as, extortion, verbal, sexual and physical harassment, cyber bullying/harassment (includes but is not limited to texting of a sexual nature, creating/participating in web pages involving Y.A.L.E. School, students and/or employees), threatening phone calls to the home of a staff member, bomb threats, disorderly conduct, possession of a weapon, making threats with a dangerous weapon, major vandalism, and use of alcohol/drugs are also examples of behavior that may involve local authorities. **Weapons of any nature are not allowed in school or on school property; making threats with a dangerous weapon is also subject to intervention or involvement with the local authorities.**

.At times, behavior off school premises and/or outside of school hours can have an effect at school. In all matters where safety, well-being, and good order of the school is threatened, disciplinary consequences may be imposed and local authorities contacted.

If a student arrives at school under the influence of alcohol or an illegal substance, or is in possession of drugs or alcohol, Y.A.L.E. School will follow the protocol found in the school's internal document covering substance abuse misconduct. Parents may request a copy.

HARASSMENT, INTIMIDATION AND BULLYING

Policy Statement

Y.A.L.E. prohibits all acts of harassment, intimidation and/or bullying (HIB). Bullying is unwanted aggressive behavior that may involve a real or perceived power imbalance. An act of harassment, intimidation or bullying can be committed by an adult or a youth against a student. A safe and civil environment in school is necessary for students to learn and achieve high academic standards. Harassment, intimidation and/or bullying, like other disruptive or violent behaviors, is conduct that disrupts both a student's ability to learn and a school's ability to educate its students in a safe and disciplined environment. Since students learn by example, school administrators, faculty, staff and volunteers should be commended for demonstrating appropriate behavior, treating others with civility and respect and refusing to tolerate HIB.

The Y.A.L.E Harassment, Intimidation and Bullying Policy will address reported incidents of HIB that occur only on Y.A.L.E. School grounds, Y.A.L.E School events, or on transportation provided by Y.A.L.E. School. The principal will refer reported incidents that occur on a sending district board of education school bus, at a sending district board of education school sponsored function, and off school grounds to the sending district's case manager of the student that was the target of the harassment, intimidation and bullying. Y.A.L.E School will work collaboratively with sending districts as they conduct the HIB investigation.

In 2008, the Pennsylvania Public School Code of 1949 was amended (24 PS 13-1303.1-A) and required schools to develop a policy relating to bullying. The following outlines the requirements of Pennsylvania's legislation: Incorporate the policy into the code of student conduct. The policy shall delineate disciplinary consequences for bullying. Identify the appropriate school staff person to receive reports of incidents of alleged bullying. Below you will find the guidelines for addressing harassment, intimidation, and bullying for the Y.A.L.E. Schools. The Y.A.L.E. HIB policy is based on the New Jersey standards for Anti-Bullying.

Harassment, Intimidation and Bullying (HIB) Definition

The following definition has been adapted from the NJ Anti-Bullying Bill of Rights web page (<http://www.state.nj.us/education/genfo/faq/AntiBullyingQA.pdf>). Each of these three criteria identified in the definition of HIB (N.J.S.A. 18A: 37-14) must be satisfied for an incident to be deemed HIB:

1. A reasonable perception of the incident being motivated either by any actual or perceived characteristic (such as sex, ethnicity, or weakness);
2. Substantial disruption or interference with the orderly operation of the school or the rights of other students; and
3. One or more of the following –
 - a. A reasonable person should know, under the circumstances, the act will have the effect of physically or emotionally harming a student or damaging the student's property, or placing a student in reasonable fear of physical or emotional harm to his person or damage to his property; or
 - b. The act has the effect of insulting or demeaning any student or group of students; or
 - c. The act creates a hostile educational environment for the student by interfering with a student's education or by severely or pervasively causing physical or emotional harm to the student.

NOTE: Pennsylvania students will follow Y.A.L.E. HIB procedures and PA Public School code 24 PS 13-1303.1-A and PA Act 26 of 2015. Delaware students will also follow Y.A.L.E. HIB procedures and 14 Delaware Code 4112(D).

PA Campus only: Cyberbullying:

Adopting the amendment of Title 18 (Crimes and Offenses) of the Pennsylvania Consolidated Statutes

Cyber harassment of a child:

- (1) A person commits the crime of cyber harassment of a child if, with intent to harass, annoy or alarm, the person engages in a continuing course of conduct by repeatedly communicating or making any of the following by electronic means directly to a child or by publication through an electronic social media service:
- (i) seriously disparaging statement or opinion about the child's physical characteristics, sexuality, sexual activity or mental or physical health or condition; or
 - (ii) threat to inflict harm.

*PA Campus should consult local law enforcement when incidents of cyber bullying are reported.

Understanding Different Types of Bullying Behavior

Bullying can be direct ("face to face") or indirect ("behind someone's back). Listed below are four types of bullying behaviors which can occur alone or in combinations:

1. • Verbal – Includes name calling, taunting, constant teasing or making threats;
2. • Physical – Includes hitting, punching, shoving, spitting, or taking or damaging personal belongings;
3. • Psychological – Includes spreading rumors, purposefully keeping people from activities and breaking up friendships or other relationships; and
4. • Electronic – Includes using the internet, mobile phone or other electronic equipment to intentionally harm others

Student Expectations

Students are expected to conduct themselves in keeping with their levels of development, maturity and demonstrated capabilities, with a proper regard for the rights and welfare of other students and school staff, the educational purpose underlying all school activities, and the care of school facilities and equipment, consistent with the code of student conduct.

Standards for student behavior are set cooperatively through interaction among the students, school administrators, school employees, school volunteers, parents/guardians, and community members, producing an atmosphere that encourages student growth.

The best discipline is self-imposed, and it is the responsibility of the staff to use disciplinary situations as opportunities to help students learn to assume and accept responsibility for their behavior and the consequences of their behavior. Staff members who interact with students shall apply best practices designed to prevent discipline problems and encourage students' abilities to grow in self-discipline. The development of this atmosphere requires respect for self and others, as well as for Y.A.L.E. School and community property on the part of students, staff and community members.

Y.A.L.E. requires all students to adhere to the rules and regulations established by the school and to submit to such disciplinary measures as are appropriately assigned for infraction of these rules.

Y.A.L.E. prohibits active or passive support for acts of harassment, intimidation and/ or bullying. Students are encouraged to support students who:

1. Walk away from acts of harassment, intimidation and bullying when they see them;
2. Constructively attempt to stop acts of harassment, intimidation and/or bullying
3. Provide support to students who have been subjected to harassment, intimidation and/or bullying; and
4. Report all acts of harassment, intimidation and bullying to a staff member at school

Consequences and Remedial Actions

Y.A.L.E. requires its school administrators to implement procedures that ensure both the appropriate consequences and remedial responses for students who commit one or more acts of harassment, intimidation, or bullying, consistent with the code of student conduct, and the consequences and remedial responses for staff members who commit one or more acts of harassment, intimidation, or bullying. In determining the appropriate consequences for students who commit one or more acts of harassment, intimidation and/or bullying, school administrators (along with BCBA and counselor consultation) will consider the following factors: the developmental and maturity levels of the parties involved, the levels of harm, and the students' histories of inappropriate behaviors. Consequences and appropriate remedial actions for students who commit an act of harassment, intimidation, and/or bullying may range from positive behavior interventions up to and including suspension or expulsion.

Factors to Consider When Determining Consequences and Remedial Measures:

Incident:

1. Age, developmental and maturity levels of the parties involved and their relationship to the school district;
2. Degrees of harm;
3. Surrounding circumstances;
4. Nature and severity of the behaviors;
5. Incidences of past or continuing patterns of behavior;
6. Relationships between the parties involved; and
7. Context in which the alleged incidents occurred.

Personal:

1. Life skill deficiencies;
2. Social relationships;
3. Strengths;
4. Talents;
5. Traits;
6. Interests;
7. Hobbies;
8. Extra-curricular activities;
9. Classroom participation;
10. Academic performance; and
11. Relationship to students and the school.

Environmental:

1. School culture;
2. School climate;
3. Student-staff relationships and staff behavior toward the student;
4. General staff management of classrooms or other educational environments;
5. Staff ability to prevent and manage difficult or inflammatory situations;
6. Social-emotional and behavioral supports;
7. Social relationships;
8. Community activities;
9. Neighborhood situation; and
10. Family situation.

Concluding whether a particular action or incident constitutes a violation of this policy requires a determination based on all of the facts and surrounding circumstances. It is only after meaningful consideration of these factors that an appropriate consequence should be determined.

School officials will impose appropriate consequences and remedial actions to any student or staff member who commits an act of harassment, intimidation and/or bullying of a student. Consequences and appropriate remedial actions for students who commit an act of harassment, intimidation or bullying may range from positive behavioral interventions up to and including suspension or expulsion. Remedial measures shall be designed to correct the problem behavior, prevent another occurrence of the problem, protect and provide support for the victim of the act, and take corrective action for documented systemic problems related to harassment, intimidation, and/or bullying. Remedial measures may include, but are not limited to, in or out of school counseling, professional development programs and work environment modifications.

Y.A.L.E. reserves the right to impose supportive and disciplinary measures based on the severity of the confirmed incident of harassment, intimidation and/or bullying. The consequences and remedial measures may include, but are not limited to, the examples listed below:

Examples of Consequences:

1. Discussion;
2. Temporary removal from the classroom;
3. Suspension of privileges;
4. Classroom or administrative detention;
5. Referral to Counselor and/or BCBA;
6. Behavior plan;
7. Referral to administrator;
8. Out-of-school suspension (short-term or long-term);
9. Reports to law enforcement or other legal action;
10. Increased supervision at school
11. Expulsion

Examples of Remedial Measures:

Personal:

1. Restitution and restoration;
2. Peer support group; Peer Mentor
3. Corrective instruction or other relevant learning or service experience;
4. Supportive student interventions, using positive behavioral support plans;
5. Behavioral assessment or evaluation, including, but not limited to, a referral to the clinical services team, as appropriate.
6. Behavioral management plan, with benchmarks that are closely monitored;
7. Assignment of leadership responsibilities
8. Student counseling and/or life skills groups;
9. Parent and parent/district conferences; and

Environmental (Classroom, School Building):

1. Classroom discussions about a HIB incident, role plays, research projects, discussing audio-visual materials on these subjects and skill-building lessons on courtesy, tolerance, assertiveness and conflict management;
2. Implementation of theme days, learning station programs, parent programs (factsheet or newsletter) School and community surveys or other strategies for determining the conditions contributing to harassment, intimidation, and/or bullying;
3. School culture change;
4. School climate improvement;

5. Adoption of research-based, systemic bullying prevention programs;
6. School policy and procedures revisions;
7. Modifications of schedules;
8. Adjustments in hallway traffic;
9. Modifications in student routes or patterns traveling to and from school;
10. Supervision of student before and after school;
11. Targeted use of monitors (hallway, playground, etc.)
12. Small or large group presentations for fully addressing the behaviors and the responses to the behaviors;
13. General professional development programs for certificated and non-certificated staff;
14. Professional development plans for involved staff;
15. Disciplinary action for school staff who contributed to the problem;
16. Parent or parent/district conferences;
17. Involvement of community-based supports and/or organizations;
18. Development of a general bullying response plan;
19. Peer support groups;
20. Placement evaluation; and
21. Law enforcement (e.g., safe schools resource officer) involvement or other legal action.

Personal- Target/ Victim

1. Meet with a trusted staff member to explore student's feelings about the incident;
2. Develop a plan to ensure the student's emotional and physical safety at school (schedule changes, arrival and dismissal supervision, school transportation supervision);
3. Provide supportive counseling if needed
4. Recommend community based support.

Reporting Procedures

At each school, the principal or the principal's designee, typically the Specialist anti-bullying specialist, is responsible for receiving complaints alleging violations of this policy. All school employees, volunteers and contracted service providers who have contact with students are required to verbally report and provide written report of alleged violations of this policy to the principal or the principal's designee on the same day when the individual witnessed or received reliable information regarding any such incident. A written report must be given to the principal the same day of the verbal report. The principal or the principal's designee is required to inform the parents and sending district of all students involved in alleged incident, and, as appropriate may discuss the availability of counseling and other intervention services.

Initial Threshold Assessment

The principal, in consultation with the anti-bullying specialist, may conduct an initial threshold assessment to determine if a given allegation, IF TRUE, rises to the level where referral to the anti-bullying specialist for investigation is appropriate.

Students, parents, and visitors are encouraged to report alleged violations of this policy to the principal on the same day when the individual witnessed or received reliable information regarding any such incident. While submission of a report form is not required, the reporting party is encouraged to use the report form available from the principal of each building or in each Homeroom. Reports may be made anonymously, but formal disciplinary action may not be based solely on the basis of an anonymous report.

Should a student be found the offender in a HIB incident, a copy of the investigation shall be included in the student's record.

School Anti-Bullying Specialist

At each school, the principal will appoint a school anti-bullying specialist. The anti-bullying specialist will be a member of the clinical services team, or another similarly trained individual, who is currently employed within the school. The school anti-bullying specialist leads investigations of harassment, intimidation, or bullying issues, and acts as the primary school official responsible for preventing, identifying, and addressing incidents of harassment, intimidation or bullying. The school anti-bullying specialist is also responsible for collaborating with Y.A.L.E. anti-bullying coordinator monthly in order to strengthen policies to prevent, identify and respond to incidents of harassment, intimidation, or bullying across campuses.

School Anti-Bullying Specialist:

Shannon Luzier sluzier@yaleschoolpa.com

NOTE: PA Public School code 24 PS 13-1303.1-A/PA Act 26 of 2015 and Delaware students will follow 14 Delaware code 4112(D).

Y.A.L.E. Anti-Bullying Coordinator

The Y.A.L.E. anti-bullying coordinator is responsible for coordinating and strengthening Y.A.L.E.'s harassment, intimidation, or bullying policies. The Y.A.L.E. anti-bullying coordinator leads monthly meetings with all school anti-bullying specialists and presents campus-wide data on confirmed incidents to the school administrators. The anti-bullying coordinator will collaborate with the anti-bullying specialist to prevent, identify, and respond to incidents of harassment, intimidation and/or bullying of students.

Anti-Bullying Coordinator- Andrea Damiani adamiani@yaleschoolnj.com

Range of Responses to an Incident of Harassment, Intimidation, and/or Bullying

Y.A.L.E. authorizes the principal of each school to define the range of ways in which school staff will respond once an incident of harassment, intimidation, and/or bullying is confirmed, and the principal shall respond to confirmed harassment, intimidation, or bullying, according to the parameters described in this policy. Y.A.L.E. recognizes that some acts of harassment, intimidation, or bullying may be isolated incidents requiring that the school officials respond appropriately to the individuals committing the acts. Other acts may be more serious or part of a larger pattern of harassment, intimidation, or bullying that they require a response either at the classroom, school building, or Y.A.L.E.-wide levels or by law enforcement officials. Consequences and appropriate remedial actions for students who commit an act of harassment, intimidation, and/or bullying may range from positive behavioral interventions up to and including suspension or expulsion.

In considering whether a response beyond the individual is appropriate, school officials will consider the nature and circumstances of the act, the degree of harm, the nature and severity of the behavior, past incidences or past or continuing patterns of behavior, and the context in which the alleged incident(s) occurred. Institutional (i.e., classroom, school building, school-wide) responses can range from school and community surveys, to mailings, to focus groups, to adoption of research-based bullying prevention program models, or to training for certificated and non-certificated staff. Responses may also include the following: participation of parent(s) or legal guardian(s) and other community members and organizations, small or large group presentations for fully addressing the actions and the school's response to the actions, in the context of the acceptable student and staff member behavior and the consequences of such actions, and to the involvement of law enforcement officers, including Y.A.L.E. anti-bullying coordinator and/or principal. Y.A.L.E. may also make resources, such as school counseling services and environmental modifications, available to the students involved.

Reprisal or Retaliation Prohibited

The Y.A.L.E. School prohibits reprisal, retaliation or false accusation against the target, witness, or any other person who has reliable information about an act of HIB or who reports an act of HIB. The consequence and appropriate remedial action for a person who engages in reprisal or retaliation shall be determined by the administrator after consideration of the nature, severity and circumstances of the act, in accordance with Y.A.L.E. policies and procedures.

All suspected acts of reprisal or retaliation will be taken seriously and appropriate responses will be made in accordance with the totality of the circumstances. The consequences for students will range from positive behavior interventions up to and including suspension or expulsion. The consequences for school employees shall be disciplined in accordance with Y.A.L.E. policies, procedures and agreements. The consequences for a visitor or volunteer shall be determined by the principal after consideration of the nature and circumstances of the act, including reports to appropriate law enforcement officials.

Consequences for False Accusation

Y.A.L.E. prohibits any person from falsely accusing another as a means of retaliation or as a means of harassment, intimidation or bullying. Staff must contact the principal when they become aware of false accusations made by;

- 1) Students: Consequences and appropriate remedial action for a student could range from positive behavioral interventions up to and including suspension or expulsion.
- 2) School Employees: Consequences and appropriate remedial action for a school employee or contracted service provider who has contact with students could entail discipline in accordance with Y.A.L.E. policies, procedures and agreements which may include, but are not limited to: reprimand, professional development, counseling, suspension, increment withholding, termination and/or bans from providing services, being in the school or on school grounds; and
- 3) Visitors or Volunteers: Consequences and appropriate remedial action for a visitor or volunteer could be determined by the school administrator after consideration of the nature, severity, and circumstances of the act, including law enforcement reports or other legal actions, removal of building or grounds privileges, or prohibiting contact with students or the provision of student services.

Policy Publication

HIB policy shall be disseminated annually to all school staff along with a statement explaining that it applies to all acts of harassment, intimidation and/or bullying, that occur on school property, at school-sponsored functions or on a school bus and, as appropriate, acts that occur off school grounds. Notice of the policy will also appear in the Parent/ Student Handbook.

Harassment, Intimidation, and Bullying Training and Prevention Programs

The principal shall develop an annual process for discussing the Y.A.L.E. policy on harassment, intimidation and bullying with students. Input from the school anti-bullying specialist will be used to re-evaluate, reassess, and review the policy. In addition, Y.A.L.E. will provide employee training on the harassment, intimidation, and bullying policy to staff members, contracted service providers, and volunteers who have significant contact with students. The training will include instruction on preventing bullying on the basis of the protected categories enumerated in N.J.S.A. 18A: 37-14 and other distinguishing characteristics that may incite incidents of discrimination, harassment, intimidation, and/or bullying.

Y.A.L.E. may observe a "Week of Respect," beginning with the first Monday in October and a School Violence Awareness Week beginning the third Monday in October. Activities must be emailed to Y.A.L.E. anti-bullying coordinator for approval one week prior to start of activities. Age-appropriate instruction will be provided with a focus on character education and prevention of harassment, intimidation, and bullying. Y.A.L.E. will provide the 6 Essential Lessons on Bullying during the first six weeks of the school year. Each campus principal will specify class periods in which to teach these lessons. In addition, Y.A.L.E. will provide on-going age-appropriate instruction on preventing harassment, intimidation or bullying during its skill development classes.

NOTE: PA Public School code 24 PS 13-1303.1-A/PA Act 26 of 2015 and Delaware students will follow 14 Delaware code 4112(D).

References:

Y.A.L.E. School Harassment, Intimidation, Bullying Policy

N.J.S.A. 18A:37-13 through 18A:37-32

N.J.A.C. 6A:16-7.1 et seq.; 6A:16-7.9 et seq.

Model Policy and Guidance for Prohibiting Harassment, Intimidation, and Bullying on School Property, at School-Sponsored Functions and on School Buses (April 2011)

PA Public School code 24 PS 13-1303.1-A/PA Act 26 of 2015

Delaware students will follow 14 Delaware code 4112(D).

HATE/BIAS INCIDENTS

It is in the policy of the Y.A.L.E. School to maintain a learning and working environment that fosters respect. Any member of the school community engaging in bias or hate based conduct that either directly or indirectly causes intimidation, harassment or physical harm to another member of the school community, or disrupts the educational process, will be subject to disciplinary action. Bias or hate based conduct is defined as suspected or confirmed act directed against or occurring to a person, private property, public property or through the internet on the basis of age, race, ethnicity, sex, disabling condition, religious affiliation or sexual orientation. A bias incident need not involve an act that constitutes a criminal offense. Individuals or groups are in violation of this policy if they engage in bias or hate based conduct at school, on school grounds, while engaging in school sanctioned activities or while traveling to or from school.

These actions may have the effect of creating a hostile environment. Individuals who are not the direct recipients of such actions may also experience a hostile environment. Third party individuals will, therefore, have the same legal right to act under this policy as those directly victimized. Members of the school community who believe they have been the subject of bias or hate based conduct may report the incident to counselor or building administrator.

DRUGS AND ALCOHOL

Building Supervisors who have probable cause to suspect that a student may be under the influence of alcohol or a controlled substance will require that parents obtain and report results of blood screening, at their expense, prior to re-admittance to the program. **In all instances involving alcohol or a controlled substance, including suspected use, possession or distribution, Y.A.L.E. School will follow the protocol contained in the school's internal document covering illegal activities involving drugs and alcohol. Parents may request a copy.**

STUDENT ELECTRONIC SMOKING DEVICE

The use of electronic smoking devices is prohibited on school grounds and all other places smoking is prohibited by the New Jersey Smoke Free Air Act. Therefore, any student found using a device is in violation of law and mandatory school policy, regardless of what is in the device.

This policy sets forth the expectations that students will refrain from the use of electronic smoking devices, including e-cigarettes, e-cigars, e-pipes, and other vaping devices on school grounds:

- The use of electronic smoking devices is strictly prohibited on school property, including any Y.A.L.E. buildings, facilities, grounds, parking lots, and school-sponsored events.
- The possession of electronic smoking devices is also prohibited on school property.
- Any student found in violation of this policy will be subject to disciplinary action to be determined by building administrator.
- The school will notify parents of any violation of this policy by their child, and may involve law enforcement if necessary if vape is believed to contain cannabis or any other controlled dangerous substance.

References:

N.J.S.A. 26:3D-55 et seq
PA Act 93 of 2019

STUDENT CANNABIS POLICY

Students are prohibited from using Cannabis, being under the influence of Cannabis, or possessing Cannabis and/or related paraphernalia at any time while on school grounds, in school or district transportation, or while attending a school-sponsored function off the school premises.¹

Property: Where there is reasonable suspicion as to the presence of Cannabis and/or related paraphernalia, school and student property may be searched or inspected by school administration. Random searches of school and student property may also occur.

Person: Any student reasonably suspected of being under the influence of Cannabis and/or in possession of Cannabis while on school grounds, in school or district transportation, or attending a school-sponsored event, may be subject to a search of his/her person by school administrators and/or evaluation, and/or formal drug testing.

- Preliminary evaluation may be conducted by a designated administrator, school nurse, or a certified Impairment Recognition Expert trained to detect and identify an individual's use or impairment from Cannabis or other intoxicating substances.
- Administrative discretion may be exercised to send a student for drug testing.
- Parent(s)/guardian(s) will be notified of any violation of this policy and will be required to come to the school to take custody of the student. Note that while parent/guardian will be notified of any violation of this policy, and where possession is confirmed, local law enforcement will not be notified or asked to assist the school in its investigation of a student's use or possession of Cannabis.
- Discipline may be imposed on the student appropriate to the offense, up to and including placement termination.
- A referral by the administration may be made to an agency licensed to assess and treat drug abuse.
- An administrator will evaluate the student's continued participation in extra/co-curricular activities.
- A re-entrance conference with administration, parent/guardian, and the student will be held.

Any student found using, selling, or distributing Cannabis and/or related paraphernalia while on school grounds or in school or district transportation, attending a school-sponsored event will be subject to discipline, up to and including placement termination.

¹ This prohibition does not apply to students who are being lawfully administered Cannabis drug therapies under the care and order of a licensed physician and approved by the school.

Reporting Requirements: Any employee or student who suspects a student may be under the influence of Cannabis due to physical appearance, observed behaviors, or other factors that indicate he or she may be under the influence or in possession of Cannabis must immediately report the suspicion to an administrator and continue to monitor the student until the student is escorted to the nurse's office or other appropriate office.

Note that such reporting will be maintained as confidential, to the extent feasible and, in light of recent legislation, must be made to the administration only and not to local law enforcement, if the report pertains to a student.

STUDENT SUBSTANCE ABUSE POLICY

Y.A.L.E. School has outlined policies and procedures for any student in the possession or under the influence of controlled substances. Parents may request a copy of these policies from your program supervisor.

CORPORAL PUNISHMENT

In accordance with State Law and Regulations, no person employed or engaged in a school or education institution, whether public or private, shall inflict or cause to be inflicted corporal punishment upon a pupil attending such school or institution; but any such person may, within scope of his employment, use and apply such amounts of force as is reasonable and necessary:

1. To quell a disturbance, threatening physical injury to others.
2. To obtain possession of weapons or other dangerous objects upon the person or within the control of a pupil.
3. For the purpose of self-defense, and
4. For the protection of persons or property;

and such acts, or any of them, shall not be constructed to constitute corporal punishment within the meaning and intent of this section.

All Y.A.L.E. staff are trained and certified in Safety-Care, a safety management program based upon the principles of Applied Behavior Analysis. The Safety-Care Curriculum provides strategies to reverse escalation and safely and therapeutically manage challenging behavior. Any incident which requires the use of a hands on Safety-Care strategy are fully documented in a Student Event/Incident Report. Parents may request an overview of the Safety Care Curriculum from your program supervisor or refer to the School Wide Positive Behavior Support section of this document.

SEXUAL HARASSMENT

The Y.A.L.E. School Policy explicitly forbids any conduct or expression that may be construed as the sexual harassment of a pupil, by an employee of the school or by another pupil. The sexual harassment of a pupil includes all unwelcome sexual advances or suggestions, requests for sexual favors, and verbal or physical contacts of a sexual nature whenever such conduct has the purpose or effect of intimidation or tends to create an intimidating, hostile, or offensive educational environment.

VIDEO SURVEILLANCE AND USE OF VIDEO RECORDINGS

Y.A.L.E. School recognizes the responsibility to provide for the safety of the school community and to protect school property. To maintain safe and secure conditions for all students, staff and property, the use of video surveillance equipment may be in place on school properties and transportation vehicles.

1. The school shall notify its students, parents and staff that video surveillance may occur on any school property or on any transportation vehicle.
2. The use of video surveillance equipment on school grounds and on other school properties shall be supervised by the building principal or designee. The use of video surveillance equipment on transportation vehicles shall be supervised by the director of transportation.
3. The use of video recordings from surveillance equipment shall be subject to the other policies of the school including policies concerning the confidentiality of student personnel records.
4. Video surveillance shall be used to promote the order, safety, and security of students, staff, and property. Recordings may be used in pupil and staff discipline matters and to provide evidence to law enforcement for prosecution purposes.
5. Video and audio recordings may be used for academic and/or /behavioral programs. Staff and students agree to this usage.

SUSPECTED CHILD ABUSE OR NEGLECT

In accordance with State law and regulations, all Y.A.L.E. staff members, should they become alerted to the possibility of potential abuse or neglect involving a Y.A.L.E. student, **are required to report such information** to the NJ Department of Child Protection & Permanency (formerly DYFS) or The Pennsylvania Department of Human Services via the Childline website. Every effort will be made to determine the validity of this information prior to contacting NJ Department of Child Protection & Permanency (formerly DYFS) or The Pennsylvania Department of Human Services. However, if there is any doubt that neglect or abuse is taking place, the mandated referral to NJ Department of Child Protection & Permanency (formerly DYFS) or The Pennsylvania Department of Human Services will be made.

Pennsylvania Act 126 requires that all school entities (a public school, charter school, cyber charter school, private school, nonpublic school, intermediate unit or area vocational-technical school) and independent contractors of school entities provide child abuse recognition and reporting training to all employees, including contracted substitute teachers who have direct contact with children. For more information and for a list of approved trainings, please visit the Pennsylvania Department of Education's website at www.education.pa.gov.

STUDENT RECORDS

Student record folders are maintained on all students in accordance with State Law and Regulations. Those students or parents wishing to review a student's record shall make an appointment with the sending school district's chief school administrator.

INTERNET GUIDELINES

Y.A.L.E.'s Internet network is provided for students and staff to conduct research and to communicate with other. Use of this network must be consistent with the educational mission of the school.

Access to network services is provided to users who agree to act in a considerate and responsible manner. Access is a privilege, not a right. Access entails responsibility. It is understood that anyone using this Internet network has agreed to abide by this Acceptable Use Policy.

Network administrators may review files and communications to maintain system integrity and insure that users are using the system responsibly. Users should not expect that files stored on school servers will always be private.

The following are not permitted:

- Sending, displaying or printing obscene/pornographic messages or pictures
- Using obscene language
- Using harassing, insulting, or harmful language including, but not limited to, ethnic, racial, and sexual slurs
- Playing games or using "chat" rooms to socialize
- Tampering with or damaging computer systems, networks, hardware, software, or settings
- Using another's password or trespassing in another's folders, work, or files
- Violating copyright laws
- Using the network for commercial purposes
- Printing to excess
- Unauthorized downloading of program or executable files
- Accessing social – networking websites
- Creating/participating in web pages that involve Y.A.L.E. School, students and/or employees

Policy violations may result in loss of privileges or legal action.

Note: Students must read and sign the Acceptable Use Policy Agreement and adhere to the procedures outlined.

TEACHER-PARENT-STUDENT CONTACT

Telephone Contact - It is the policy of Y.A.L.E. to foster open communication between teachers and parents. The following guidelines have been established in order to maintain responsible communication. Y.A.L.E. staff are obliged to direct their home communication to parents and guardians only. It is our policy that parents and students not call teachers at home. Additionally, students are prohibited from contacting staff through social-networking websites.

Direct Contact - With regard to teacher-student contact outside of school, it is the Y.A.L.E. policy that teachers must initially secure permission from building supervisors prior to contacting parents. Teachers must then receive parental approval before any arrangements for outside contact are made. Parents should have prior knowledge of any contacts or conversations that transpire between school personnel and their children. Faculty members who wish to meet with parents outside of school must obtain written permission from the Director. Personal internet contact with students or parents is forbidden. School related internet or e-mail correspondence must be done using the Y.A.L.E. School internet address, with copies sent to a Y.A.L.E. School supervisor. NO COMMUNICATION of any kind (phone, text, e-mail etc.) should ever be made from personal cell phones, personal e-mail accounts or social-networking websites.

PARENTAL QUESTIONS

Many times, parents have questions or concerns about their child's courses, particular lessons or activities. To assist parents in their understanding, the following guide is offered:

- Discuss your question with the teacher involved. If you still have questions, make an appointment to discuss your questions with the principal, supervisor, or child study team member.
- If you still have questions, then;
- Call the appropriate central office administrator for a conference. If you still have questions, then;
- Ask to see the Executive Director.

Remember, even though friends and neighbors may have similar questions, they probably do not have answers. Working through the Y.A.L.E. staff keeps parents in touch with the people who are responsible for answering questions, interpreting school programs and solving problems.

PARENTS RIGHTS IN EDUCATIONS – PENNSYLVANIA

As an important part of the IEP team, parents often have questions or need information to actively and effectively participate as IEP team members. School districts provide parents with a hard copy of the Procedural Safeguards Notice for this purpose.

The full document and related forms, can be downloaded online at:

<https://www.pattan.net/Forms/The-Procedural-Safeguards-Notice>

A brochure entitled "Parents' Rights: Understanding the Procedural Safeguards Notice" is available here:

<https://www.pattan.net/Publications/Parents-Rights-Understanding-the-Procedural-Safegu>

Parents may also find it helpful to access an audio recording of the Procedural Safeguards or watch the training videos offered by the Office of Dispute Resolution. The link below provides those resources:

<https://odr-pa.org/parents/parent-resource-library/procedural-safeguards-notice/>

Please note that a Spanish version of the brochure is also available to download at the site above

Y.A.L.E. School
Acceptable Use Policy Agreement for Student Internet Use
2023-2024

A. Purpose

The purpose of the Acceptable Use Policy (AUP) is to create rules and regulations governing the use of the Internet, computers, iPads, iPods and any electronic device afforded students by Y.A.L.E. Schools (Y.A.L.E.) for academic and reinforcement purposes.

B. Acceptable Use Policies and Procedures

1. Y.A.L.E. has taken reasonable precautions to eliminate controversial material from its facilities.
2. Student use of the Internet through Y.A.L.E. facilities is strictly limited to further educational research and/or expand upon in-class lessons using safe sites as determined by Y.A.L.E. administration.
3. Online users during club periods and specials must adhere to the same behavioral rules and regulations that are applicable during academic classes.

C. Prohibited Activities

1. Students are prohibited from using Y.A.L.E. Internet or computer resources or other electronic devices afforded students for academic or reinforcement purposes for inappropriate uses, including, but not limited to the following:
 - a. Downloading or making unauthorized copies of software
 - b. Using a camera feature on any electronic to make unauthorized copies of copyrighted materials (or any Y.A.L.E. materials, such as Y.A.L.E. forms or documents, including but not limited to those with names of students, teachers, etc.)
 - c. Printing or distributing unauthorized copies of copyrighted materials or any unauthorized Y.A.L.E. materials
 - d. Using software that is not licensed by the manufacturer or approved by Y.A.L.E.
 - e. Sending, posting, or forwarding messages or pictures containing defamatory, obscene, sexual or offensive statements or images
 - f. Attempting to access sites featuring pornography, terrorism, espionage, theft or drugs
 - g. Use of facilities to harass, attack, insult or stalk others
 - h. Use for reasons of no educational value
 - i. Engaging in any criminal activity in violation of local, state or federal law
 - j. Introducing a virus, harmful component, corrupted data or the malicious tampering with any of Y.A.L.E.'s computer systems
 - k. Engaging in unethical activities or content
 - l. Accessing social-networking websites
 - m. Creating a video or audio recording of instruction, class discussions, or conversations between peers, teachers, or other Y.A.L.E. staff unless authorized by a teacher, supervisor or administrator for academic purposes
 - n. Removing Y.A.L.E. electronic equipment or devices from school premises, unless approved by Campus Supervisor for remote learning activities
 - o. Attempting to access Y.A.L.E. student or staff information databases
2. While using Y.A.L.E. facilities, users are prohibited from revealing their own personal information or the personal information of others, including but not limited to, full name, home address, social security number, telephone number.

D. Noncompliance

1. If the AUP is violated, Y.A.L.E. will notify student as soon as practicable and afford the student the opportunity to be heard (check procedure for normal violations of school rules)
2. In addition to other disciplinary actions, any user who does not adhere to the AUP will also be subject to:
 - a. Responsibility for full financial restitution to Y.A.L.E. or any other injured party
 - b. Indemnification of Y.A.L.E. for any damages incurred or assessed as a result of the user's inappropriate unauthorized use of a Y.A.L.E. facilities
 - c. Denial of access to Y.A.L.E. computers, iPads, other devices and Internet Access for an appropriate period of time to be determined by Y.A.L.E.
 - d. Subject to other criminal and/or civil penalty

E. Privacy

1. Users have limited privacy expectation in the content of their communications and activities while using Y.A.L.E. facilities. Y.A.L.E. reserves the right to monitor, inspect, copy, review, and store without prior notice any and all usage of the Internet, as well as any and all materials, files, information, software, communications, and other content transmitted, received, or stored in connection with this usage.
2. All such information, content, and files are the property of Y.A.L.E. Users should have no expectation of privacy regarding them.

F. Consent

By accessing Y.A.L.E.'s computers, iPads, and other electronic devices, and using its Internet capabilities, users agree to adhere to Y.A.L.E. policies regarding their use. Users further agree to report any misuse or policy violation to the Building Supervisor. Parents and students agree to hold Y.A.L.E. harmless for materials that students access or acquire, including copyright infringement violation, while using the facilities.

I have read the Acceptable Use Policy and fully understand and agree to its contents.

Parent/Guardian Signature

Student Signature

2023-2024
PARENT/STUDENT APPRAISAL FORM

Each student intake will include a comprehensive verbal description of the curriculum, policies, and procedures of the Y.A.L.E. School. I further understand that should my son/daughter be accepted and attend the Y.A.L.E. School, exhibition of any of the following behaviors may jeopardize his/her placement:

1. Chronic physically aggressive behavior.
2. Possession, use, or sale of illicit drugs/alcohol/weapons.
3. Unauthorized leaving of the school building and/or school grounds.
4. Failure to remain in or report to the designated programming area upon staff direction.
5. Student piercings, cell phone, iPod etc. use during the school day and off-task/non-sanctioned computer use.

Further, I understand and accept the following policies and procedures:

1. If my son/daughter is excluded from class based upon disruptive behavior, fails to move to a designated location as directed by a supervisor, or if deemed necessary by Y.A.L.E. School staff, I will attend a meeting at the Y.A.L.E. School upon request.
2. Students are accepted to the Y.A.L.E. Program with the knowledge that their particular profile of needs can be met within our program design. Therefore, acceptance and program structure rely upon the implementation of out of school interventions including:
 - Students on medication must adhere to the regimen prescribed by the physician.
 - Students on psychotropic or neuroleptic medication are accepted conditionally.
 - If medication is changed or discontinued, written notice must be submitted to the school by the prescribing physician. If deemed necessary, a meeting may be scheduled with Y.A.L.E. staff to discuss the medication changes and students' school performance. Lack of cooperation with this procedure may jeopardize a student's placement in the Y.A.L.E. program.
3. Random searches, including wand searches, may be utilized at the discretion of the administration.
4. If a student expresses suicide ideation or intent, a therapist may inform the parents and request that they take their child to the crisis center where a determination can be made with regard to the child's safety. The child can return to school only when accompanied by a note from the crisis center stating he/she is no longer a threat to himself/herself or others.
5. Y.A.L.E. School may collect and test a urine sample from a child at the schools discretion(s). I understand that the sample will be collected at Y.A.L.E. and then sent to a local laboratory for analysis. Results of the test will be given to the Y.A.L.E. School. I also understand that I will be billed directly by the laboratory performing the urinalysis. It is further understood that any refusals to comply with the administration of this test and/or positive results may result in requiring enrollment and satisfactory completion of a substance abuse program.
6. Parents are obligated to provide full disclosure of any past, present, or future behaviors which may impact any of the students at the YALE School. This disclosure includes, but is not limited to, any involvement with the legal system or NJ Office of Administrative Law regarding due process or other complaints.
7. Any history of violent behavior, sexual abuse, predatory behavior, criminal conviction, probation must be disclosed to admissions during student's intake appointment.
8. Matters involving child custody, visitation, restraining orders etc. must be communicated in a timely fashion, followed by providing the necessary documentation in writing.
9. Parents are obligated to review Y.A.L.E.'s Student/Parent Handbook including Harassment, Intimidation and Bullying Policy with their child. Acts of harassment, intimidation or bullying (including but not limited to gestures, written, verbal, physical or technology based harassment) may jeopardize a student's placement at the Y.A.L.E. School. Parents are encouraged to direct questions to school administrators with any concerns in this regard.
10. School personnel who come in contact with a child and observe behavior or conditions that may potentially indicate abuse or neglect are required by law to report their suspicions. Suspected abuse and neglect must be reported to child welfare authorities without delay, and subsequently to law enforcement. It then becomes the responsibility of the state authorities to investigate and take appropriate action.
11. Given enrollment in a public school setting parents are aware that repeated instances of loud, disruptive, dangerous behaviors, including elopement, may result in the consideration of a more appropriate setting.
12. Parents/Guardians are strongly encouraged to communicate directly with a Y.A.L.E. School principal and/or sending district representative whenever there is concern about their child's educational program (for example: goals, objectives, instruction, academic group placement, progress reports, behavior management and/or social-emotional functioning).
13. Parents/Guardian acknowledge if visiting or enrolled students engage in unsafe, disruptive and/or dangerous behavior, Y.A.L.E. staff, trained in Safety-Care (interventions based on extensive clinical research and drawn from the field of Applied Behavioral Analysis), will utilize strategies to prevent crises and support students in a humane and safe manner.

SIGN-OFF

I have read and I have been given a copy of the 2023-2024 Student/Parent Handbook and the Parent Appraisal Form and agree to abide by all of its provisions.

Parent/Guardian Signature

SIGNATURE REQUIRED

Student Signature

Date